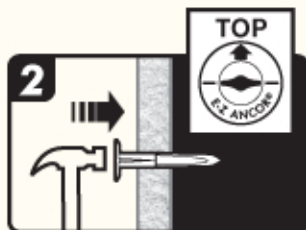
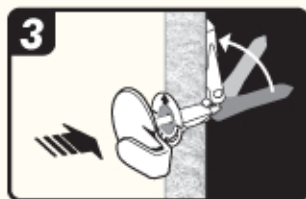


**Buildex®****EZAncor®****TAP-N-LOCK™ Utility Hook****Installation Instructions / Instrucciones de instalación**

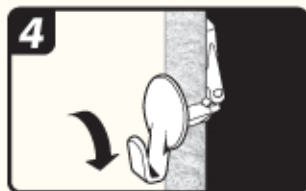
- 1. Snap closed.**  
Ciérrela a presión.



- 2. Tap into wall, arrow (TOP) up.**  
Introdúzcala en la pared—flecha arriba (TOP).



- 3. Position hook sideways and push into anchor hole.**  
Coloque de lado el gancho e introdúzcalo en el agujero de anclaje.



- 4. Twist hook 1/4 turn to lock in place.**  
Gire el gancho 1/4 de vuelta para fijarlo.